

Installation Guide

安裝說明書

VEHICLE APPLICATIONS
適用車型

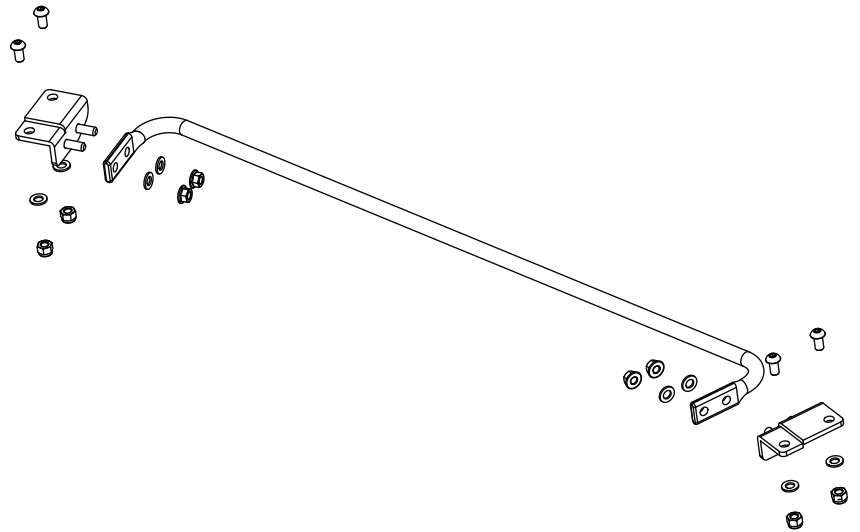
HONDA FIT / JAZZ 2nd GE6/7/8/9
HONDA CR-Z 1st ZF1/2

PART NO. 6940

Contents 內含配件

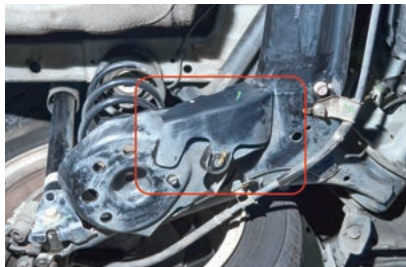
※ Please apply hand tools for installation
安裝過程請使用手動工具

1. Sway Bar 17mm 防傾桿 1PCS
2. Bracket (R/L) 防傾桿固定支架 2PCS
3. Button Head Socket Cap Screw M10x1.5x20 半圓頭內六角螺絲 4PCS
4. Nylon Insert Lock Nut M10x1.5 尼龍防鬆螺帽 4PCS
5. Spring Washer 彈簧華司 4PCS
6. Lock Nut M10x1.25 防鬆螺帽 4PCS
7. 10M Washer 華司 4PCS



Installation tips 安裝提示

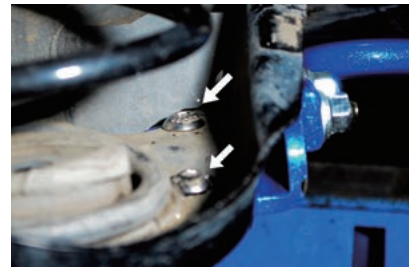
※ Please read the HARDRACE Tech Tips before installing the products.
在安裝之前請詳閱 HARDRACE 技術提示



1. Remove the cover on the lower arm 護蓋須拆除



2. Insert button head socket cap screws from the inside of spring seat, and then fix the brackets.
使用半圓頭內六角螺絲於彈簧下座內，安裝固定支架



3. Figure of installation for RH/LH brackets.
固定支架 (左/右) 安裝示意圖



Recommended Torque for bolts/nuts
螺絲/帽鎖緊扭力參考

M10x1.5 Nylon Insert Lock Nut 尼龍防鬆螺帽	80Nm
M10x1.25 Lock Nut 防鬆螺帽	70Nm

HARDRACE Tech Tips 技術提示

Warning! Risk of Death may be caused by vehicle slipping or toppling off the jacking platform.

警告! 在頂車機的作業下，車輛的滑動或倒塌可能會造成人員致命的危險

Motor vehicle mechanical knowledge is expected. In some country & states, fitment may only be legally performed by a licensed mechanic. Check the regulation in your area.

請預先了解車輛機械知識與檢察在您所屬的國家或區域地方是否需要專業技師執照才可執行更換安裝，以免觸法

When swapping the suspension kits, be sure to note the routing and mounting position of all wires, cables and bolts orientation, certain damage might be caused by reinstalling differently from the original factory position. Please refer to factory manual for proper installation and safety stands.

當更換您車輛的懸吊套件時，請記下您的線組與管線安裝位置，非原廠相同的安裝位置可能會造成元件之損壞，造成車輛的危險。請參考原廠車輛手冊



TEL: +886 3 5370822 FAX: +886 3 5373027
E-MAIL: info@hardrace.com WEBSITE: WWW.HARDRACE.COM

